


A blue-tinted photograph of an industrial facility, possibly a power plant or refinery, with complex piping and structural elements. In the foreground, a worker wearing a white hard hat and a blue uniform is seen from the side, looking towards the industrial equipment. The overall mood is industrial and professional.

# BUILDING A LEAGUE OF OUR OWN

**SUTOL**  
ENGINEERING

[info@sutolengineering.co.za](mailto:info@sutolengineering.co.za)






**A RELIABLE PARTNER  
THAT PRODUCES  
CONSISTENT QUALITY**



# METROLOGY

---

We are sticklers for precision at Sutol because measurements are the only assurance we have that our product will work properly on the client's shop floor. This is the reason Volkswagen has trusted Sutol Engineering for over 6 years and were awarded the job for their first robotic project. It is also the reason that we produced the best results for Mercedes Benz SA's sophisticated quality checks.



“Unmatched flexibility and the widest measurement volume out there”



# OUR TECHNOLOGY

---

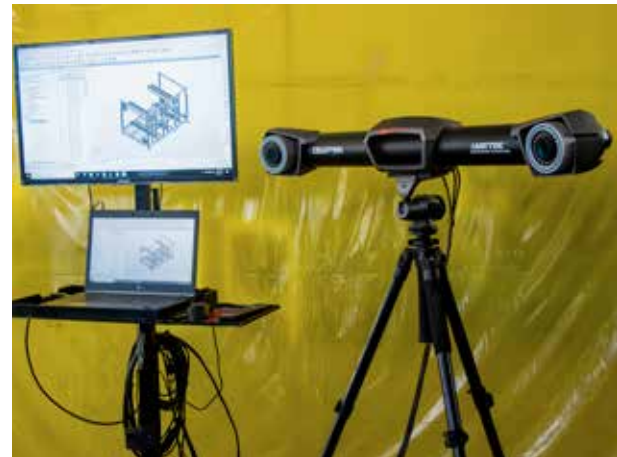
## PORTABLE OPTICAL CMM

The HandyPROBE Next™ portable optical CMM provides measurement accuracy that is insensitive to the instabilities of any environment. Free of any rigid measurement setup, the part, optical tracker and wireless probe can all be moved at any time during the measurement sequence. Specifically designed for use on the shop floor, the system offers unmatched flexibility and a wider measurement volume than other portable CMMs



## OPTICAL CMM 3D SCANNER

Free of any rigid measurement setup, the MetraSCAN 3D™ optical CMM scanner is insensitive to the instabilities of the environment. With its extendable measurement volume, incredible speed and impressive data acquisition proficiency with challenging materials, it represents the most complete metrology-grade 3D Scanner on the market and a practical alternative to traditional portable CMMs



## C-TRACK OPTICAL TRACKER

We have trained members of our team that have worked in the production process so they manage the technology with insight. They can manage the technology in any environment.



# OUR METROLOGY TEAM

We have trained members of our team that have worked in the production process so they manage the technology with insight. They can manage the technology in any environment.



## YOUR MEASUREMENTS

We can pack up our equipment and send our team to fulfil all your on-site measurement projects – it has all been designed to work well on any shop floor, and measure projects of every size and shape.






# OTHER CLIENTS

---

FORD, MBSA, LINDE & WIEMANN, LEAR, DSV





Tel: +27 82 522 4168

[info@sutolengineering.co.za](mailto:info@sutolengineering.co.za)

13 Bell Street, Kruisriver,  
Uitenhage, Eastern Cape  
South Africa

**SUTOL**  
ENGINEERING